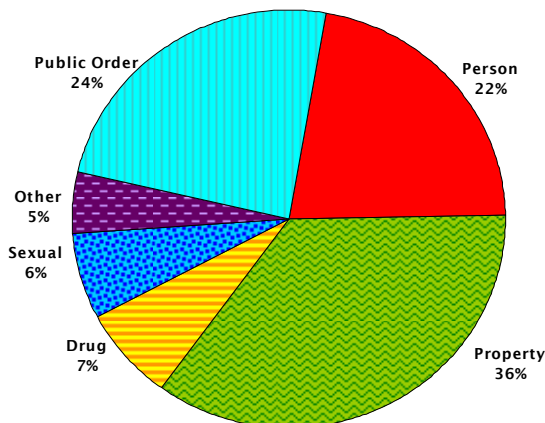


# Second Quarter of 2009

(April through June)

## WCCF Quarterly Detention Report

In the second quarter of 2009, over 3,000 youth were admitted to juvenile detention in Wisconsin

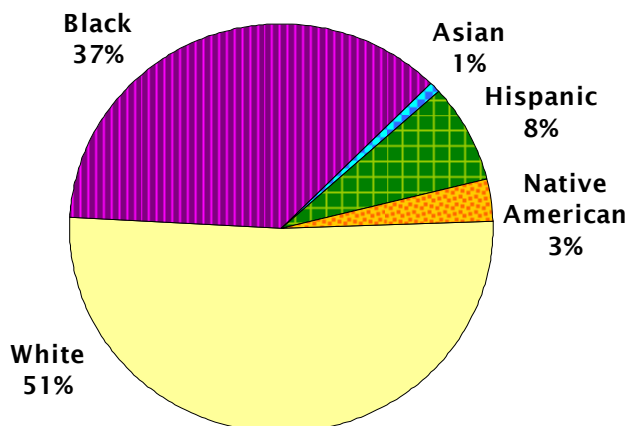


### Breakdown by Offense (State)

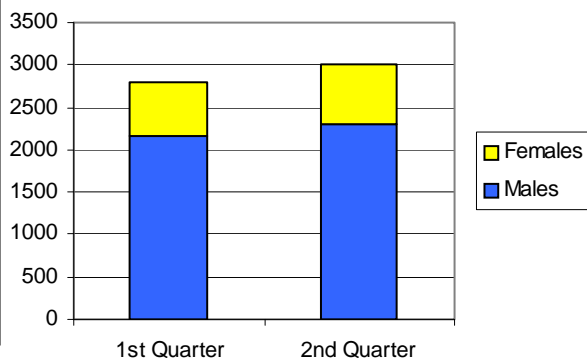
- One primary purpose of detention is to protect the community from dangerous kids
- Crimes against persons are usually considered dangerous.
- Crimes against persons were **22% of all crimes this qtr., down 2% from last quarter**

### Breakdown by Race (State)

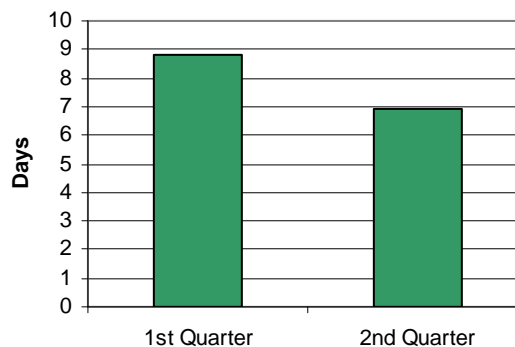
- 80% of Wisconsin's juvenile population aged 10-16 are White, but Whites only represent **51%** of the juvenile detention population
- Black juveniles are 9% of the population but are **37%** of detention's population



Male to Female Detention Stats



Average Length of Stay

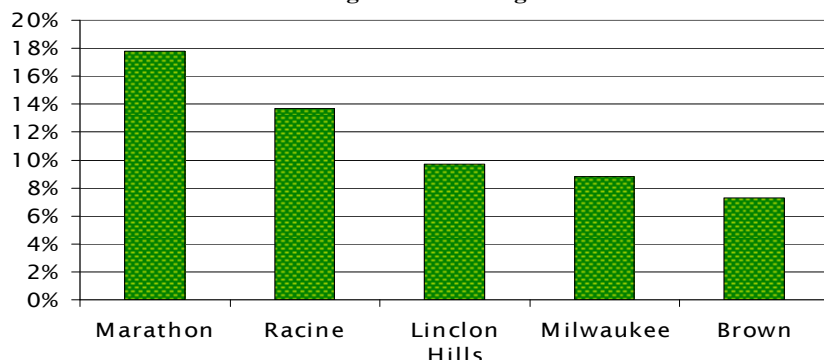


### Additional Statewide Statistics

- Average length of stay for all youth released in this period was **6.3** days, and for status offenders specifically it was **5** days
- Average age statewide at admission is **15** years
- Girls were **23.2%** of all admissions and **65.4%** of status offenses

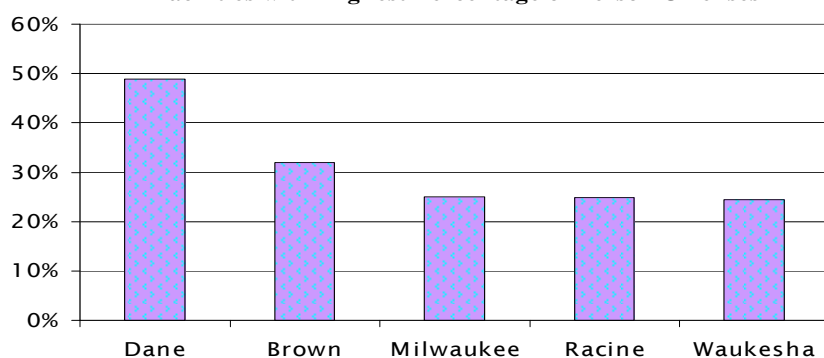
## There are 17 Juvenile Detention Facilities around Wisconsin, many of which serve youth from multiple counties

**Facilities with Highest Percentage Status Offenses**



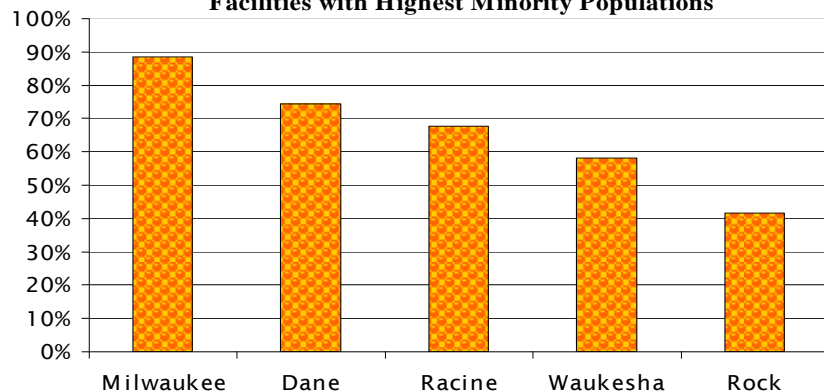
- State and Federal laws discourage holding juvenile status offenders in secure detention facilities
- Facilities ranged from **0% to 17.8%** status offenders
- Status offenders may be run-aways or truants for example

**Facilities with Highest Percentage of Person Offenses**



- By statute, detention can be used if the juvenile has committed a delinquent act and presents substantial risk of physical harm to a person or is a flight risk
- Person offenses pose the most risk to the community and most often fit these requirements
- Person offenses ranged from **3.6% to 48.9%** this quarter

**Facilities with Highest Minority Populations**



- All counties have higher percentages of Whites than Minorities in the population
- These facilities represent the highest percentages of Minorities in detention
- All facilities had higher minority representation than the general population

### Additional Facility Statistics

- Average length of stay ranged from **11 (Dane)** to **3 days (Northwest Regional)**
- Girls ranged from **17.8 of Marathon County's** to **1.1% of Waukesha County's** population
- Property crime admissions ranged from **23.0% in Dane** to **52.5% in Northwest Regional**

\* Raw detention data obtained from the Office of Justice Assistance, Juvenile Justice Unit with assistance from the Department of Corrections, Office of Detention Facilities

\* Population estimates from "Easy Access to Juvenile Populations: 1990-2007." Available online at <http://www.ojjdp.ncjrs.gov/ojstatbb/ezapop>

\* Percentages calculated and graphs created by WCCF

For more methodology information and explanations please visit [http://www.wccf.org/justice\\_pub.php](http://www.wccf.org/justice_pub.php)

**For further information or to find out how your county does on outcome measures, please contact:**

**Jim Moeser or Shauna Manion**

Wisconsin Council on Children and Families  
555 West Washington Avenue, Suite 200  
Madison, WI 53703  
608-284-0580

jmoeser@wccf.org; smanion@wccf.org  
[www.wccf.org](http://www.wccf.org)

